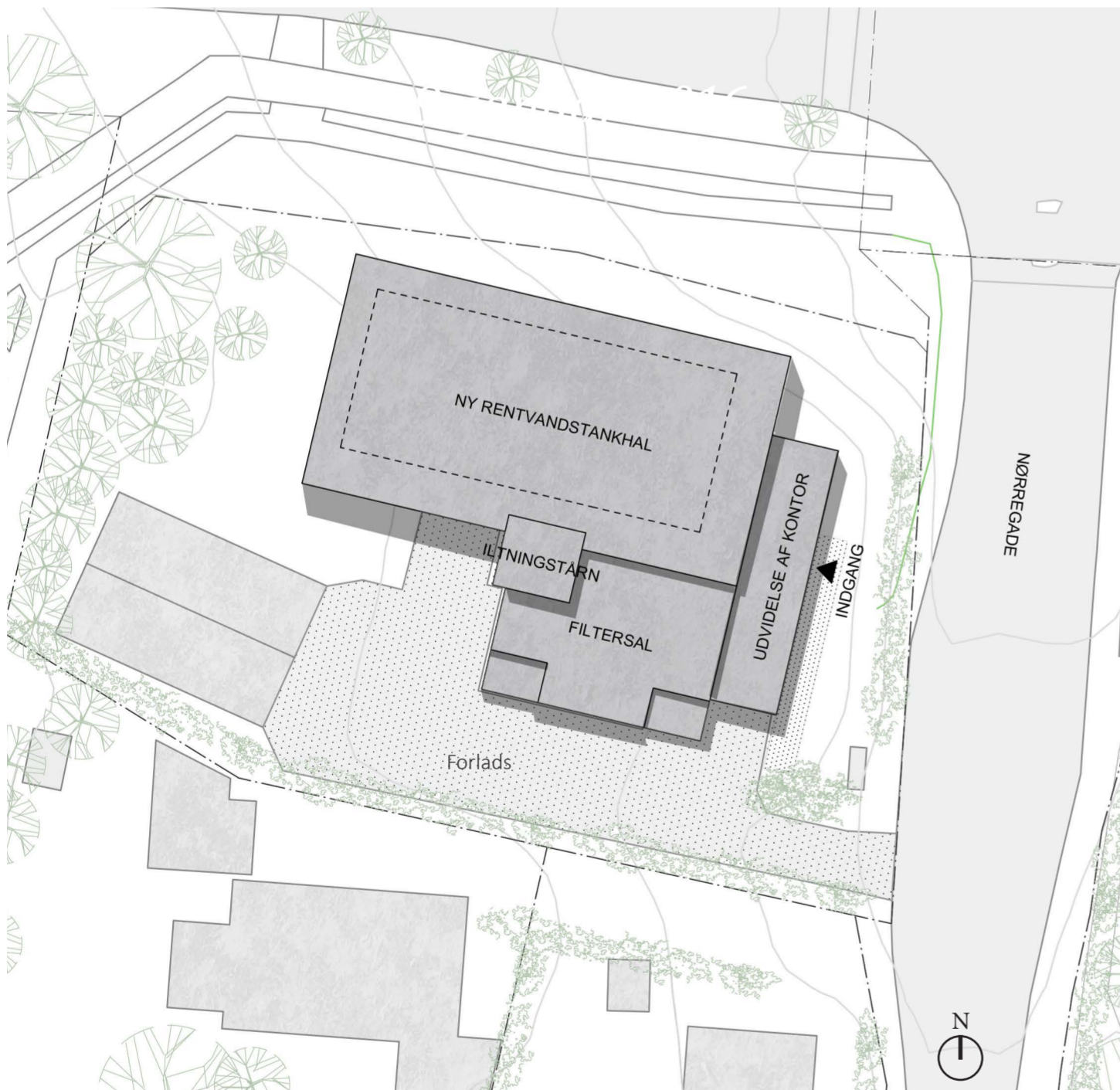




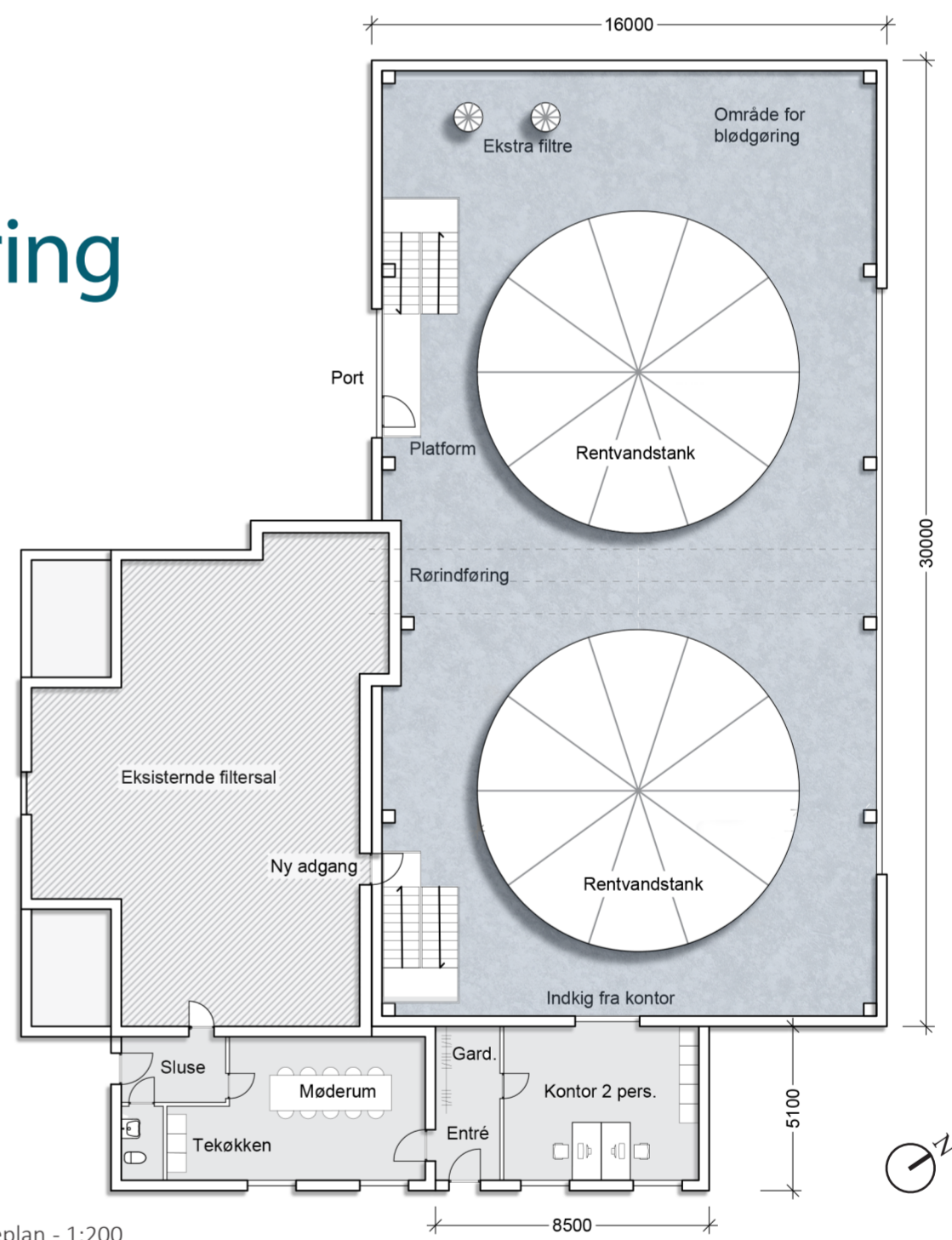
Skitseillustration af udvidelse set fra krydset ved Nørregade og Tune Parkvej

TUNE VANDVÆRK

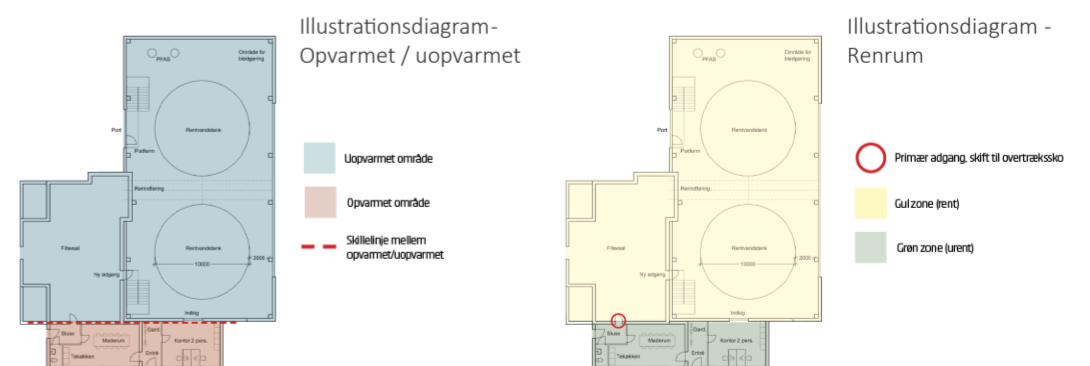
Udvidelse og modernisering



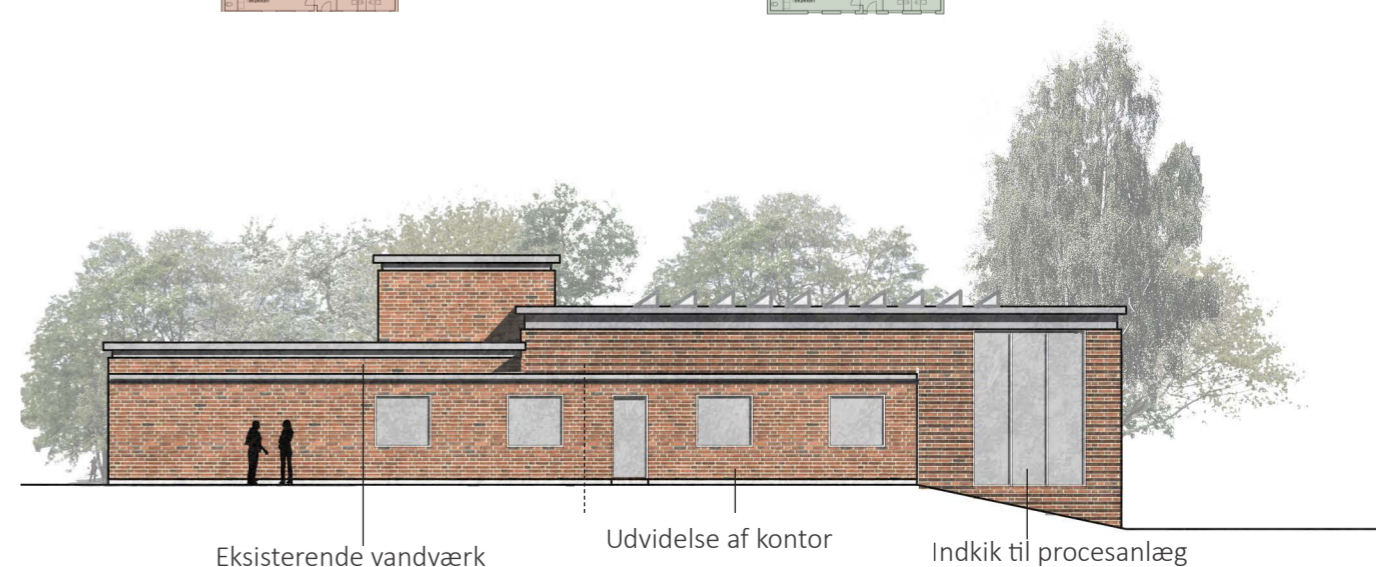
Situationsplan - 1:400



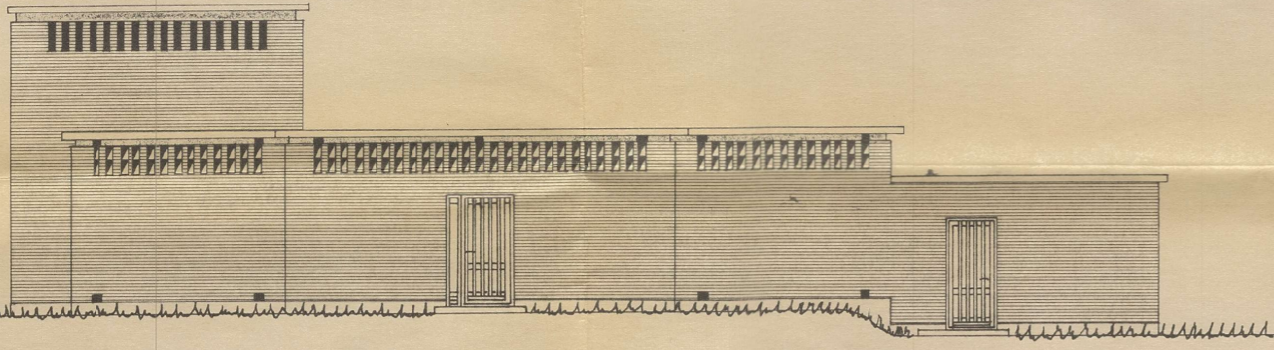
Etageplan - 1:200



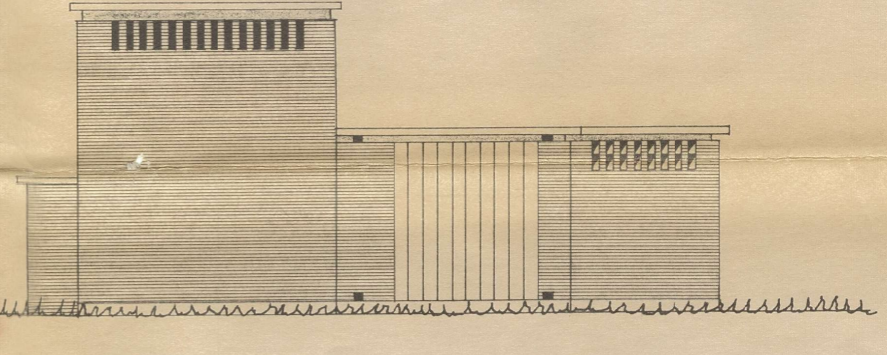
Nordvendt facade- 1:200



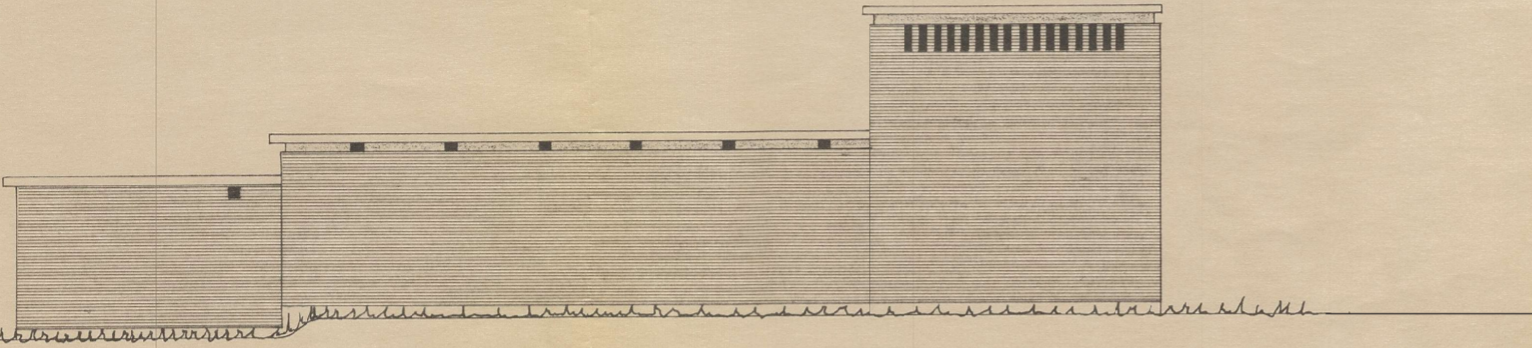
Østvendt facade- 1:200



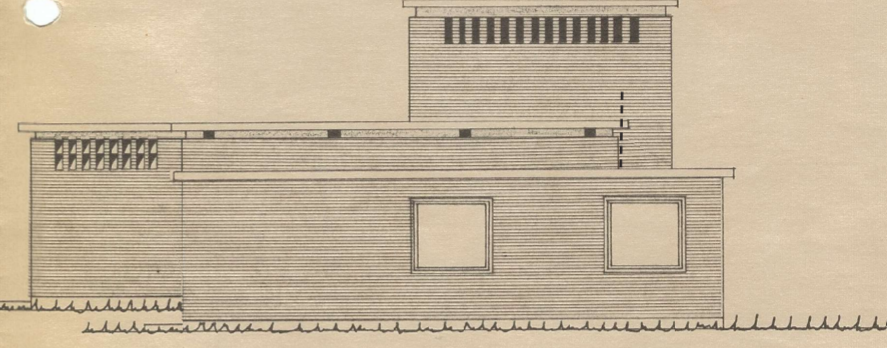
Facade mod syd



Gavl mod vest



Facade mod nord



Gavl mod øst

Originale tegninger af eksisterende vandværk

19 udluftningsriste under tag
6 udluftningsriste over sokkel

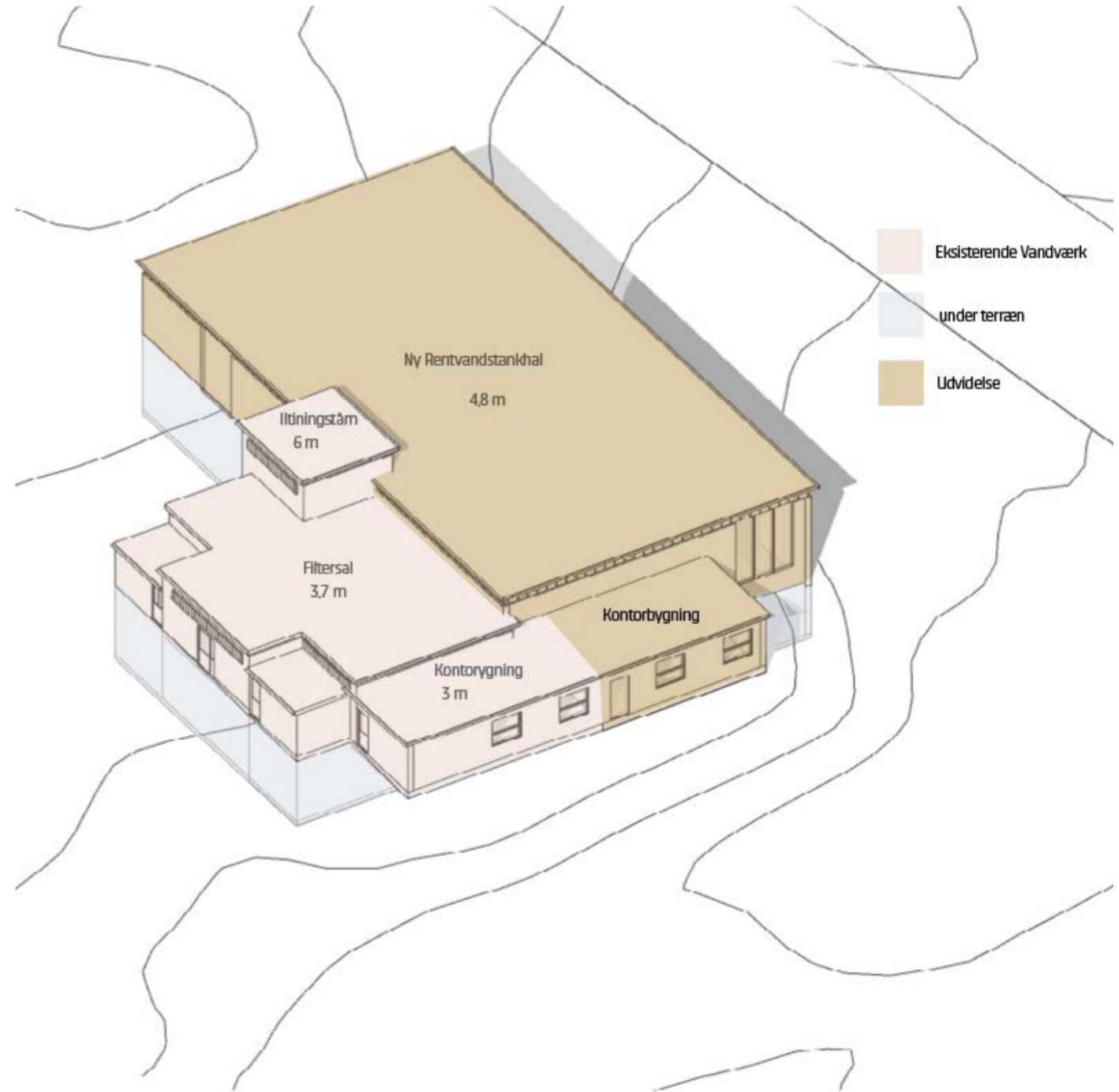
GREVE KOMMUNE
BYGNINGSVSP
Indgætt. 1 10 JUN 1974
Journ.nr. 412/74
Matr.nr. 9a-To



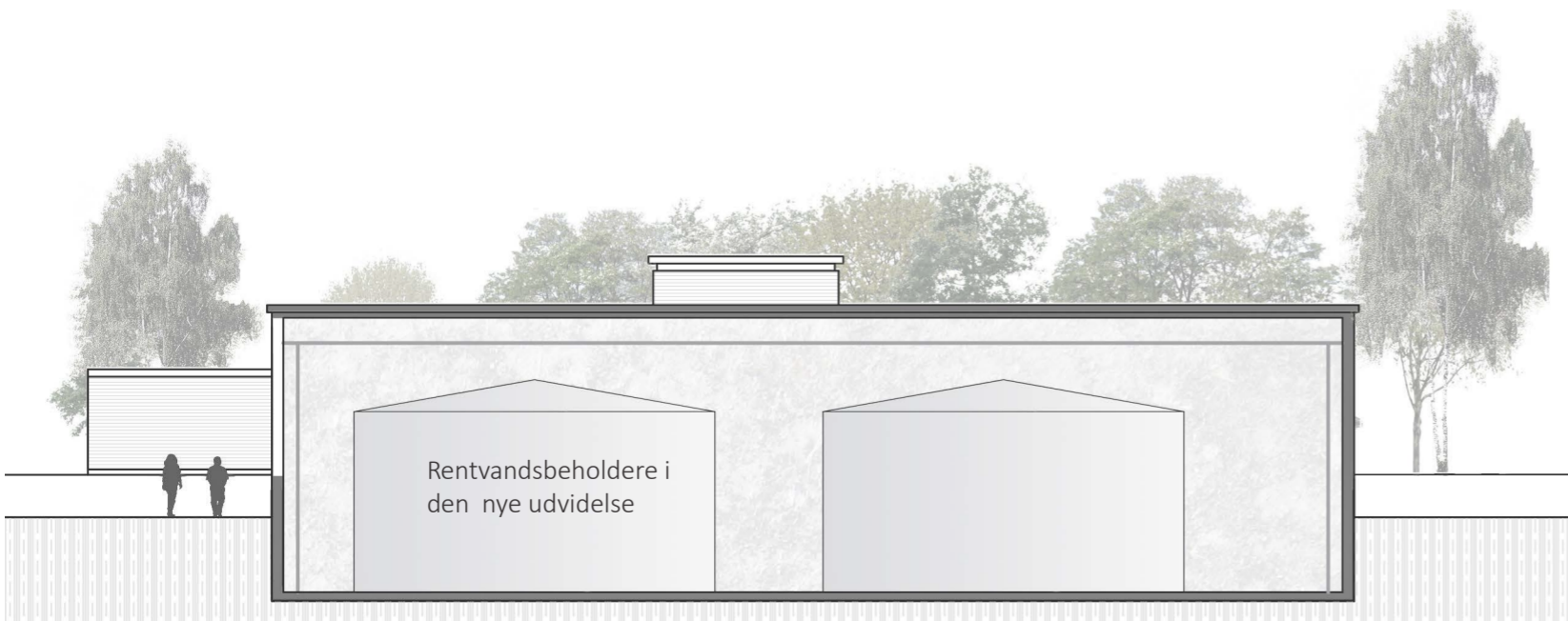
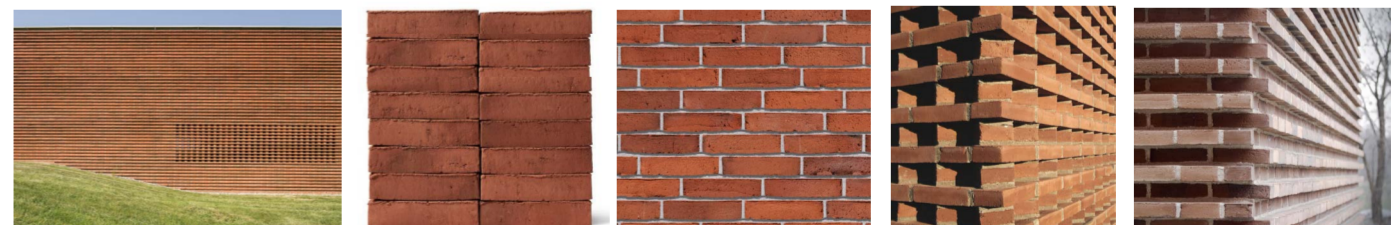
Skitseillustration af udvidelse set fra Nørregade



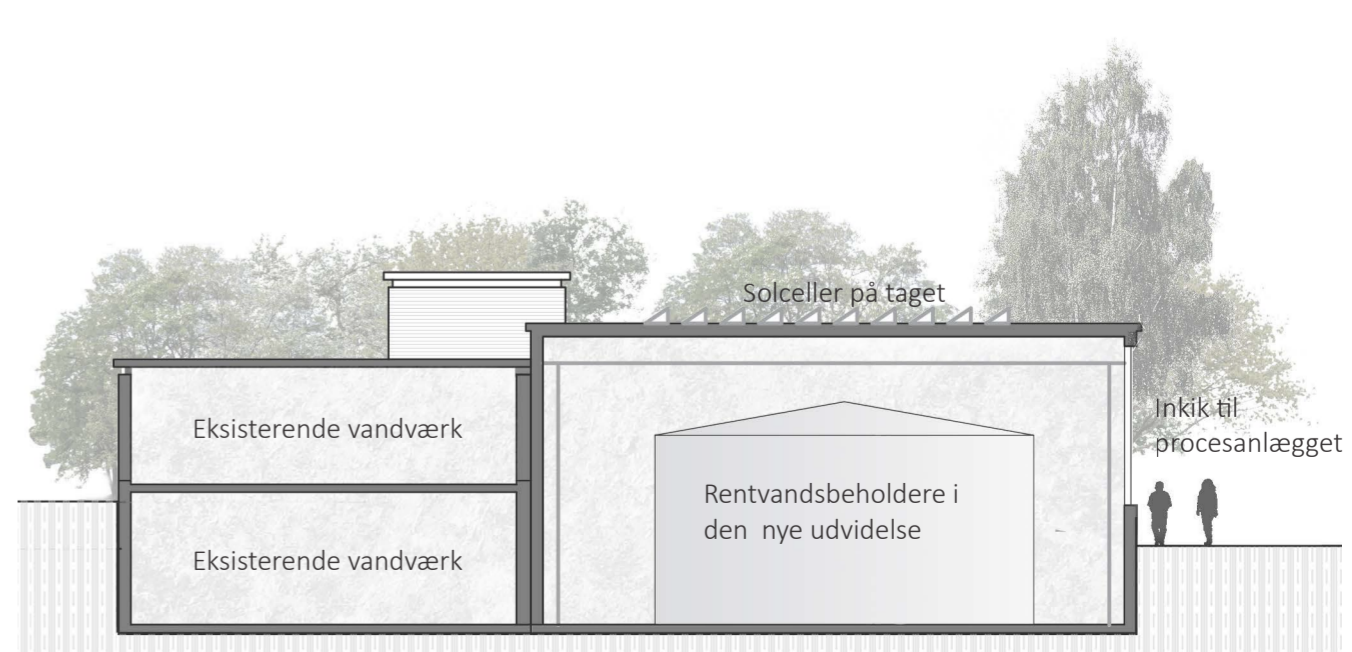
Indblik til anlægget fra Tune Parkvej



Murværket på den nye udvidelse kan udføres med særlig detaljering, som giver bygningen et tydeligt kendetegn



Længdesnit i ny rentvandsal - 1:200



Tværsnit i ny rentvandsal - 1:200